

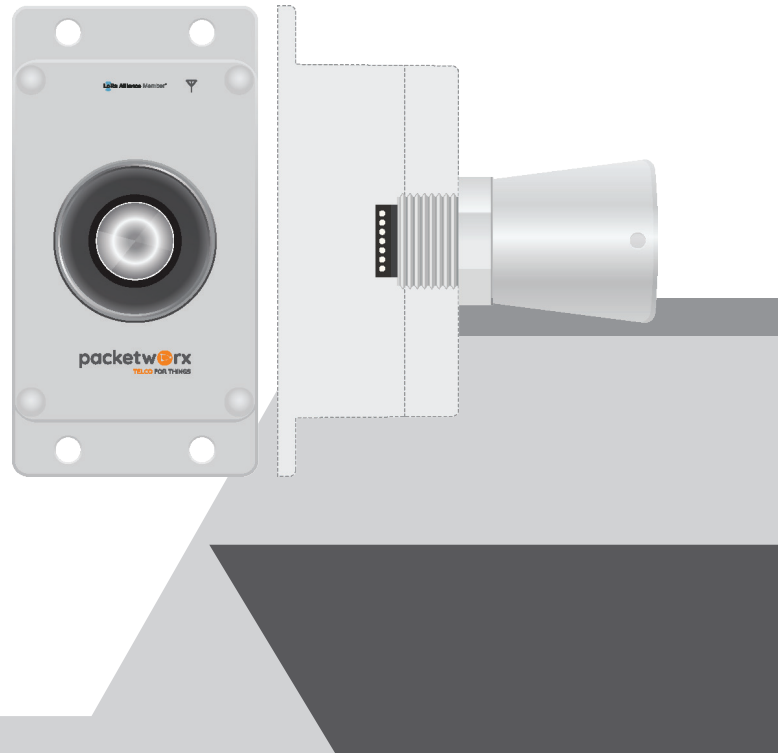
packetSENSE

Ultrasonic Proximity Level Sensor 10M

packetSENSE Ultrasonic Proximity Level Sensor 10M is a high quality LoRaWAN® device integrated with an ultrasonic proximity sensor. It is a non-contact, highly reliable, easy to install, and maintain device. It is used to measure objects from 50cm-1000cm.

packetSENSE Ultrasonic Proximity Level Sensor 10M has a wide range of applications. They are most commonly used to sense nearby objects to avoid collision. It also finds applications in the retail industry they can detect motion and the correlation between the customer and product they might be interested in. A user is immediately notified of discounts and special offers of nearby products.

They are also used for parking availability in places such as malls, stadiums or airports. Other use cases are assembly lines of different industries like food, chemical, machine tools and water level measurement.



Features

- LoRaWAN®-compatible Level Monitor
- Optimized as IoT end-node
- Notification when unit gets disconnected to power source
- Fit for outdoor installation

Applications

- Water level measurement
- Proximity zone detection
- People detection
- Long-range object detection
- Height monitoring
- Auto sizing
- Automated factory

Technical Specification

Data Communication Supported

Technology	LoRaWAN®
Frequency	EU868/AS923-3
Antenna	External/can be configured
Tx Power	25dBm

Electricals

Input Voltage Rating	5.0VDC (max)
Operating Voltage	3.3V – On-board electronics
Power Source	Li SOCl2
Battery Capacity	8000mAh

Sensor

HRXL-MaxSonar	MB 7388 (50 – 1000 cm range)
Operating Temperature Range	-40 °C – +65 °C
Measurement Range	50cm to 10m
Accuracy	±1mm

General Specifications

Ingress Protection	IP66
Dimension	101mm x 101mm x 57mm
Mounting	Four Mounting Holes

packetworx
WE CONNECT THINGS

Packetworx IoT Technology Hub
G/F ISquare Building, 15 Meralco Avenue,
Ortigas, Pasig City, 1605, Philippines

(+632) 7971-9211 | (+63) 917-189-7613